

A.N.C.I. Servizi S.r.l.  
a socio unico  
Sede legale e amministrativa  
20149 MILANO  
Via Monte Rosa, 21  
Tel. 02.438291  
Fax 02. 48005833  
Cap. Soc.: € 10.400 i.v.  
C.F./P.I.: 07199040150  
Reg. Imprese n° 229059  
Trib. di Milano  
R.E.A. n° 1147818



**CIMAC**  
Centro Italiano  
Materiali di Applicazione  
Calzaturiera



PRD N° 0171 B

Membro degli Accordi di Mutuo Riconoscimento  
EA, IAF e ILAC

Signatory of EA, IAF and ILAC  
Mutual Recognition Agreements

Sede operativa: 27029 VIGEVANO (PV) - C.so G. Brodolini, 19 - Tel. 0381.84722 - Fax 0381.73393 - E-mail: info@cimaonline.com - Internet: http://www.cimaonline.com

According to the EEC instructions 89/686 dated 21<sup>st</sup> of December 1989, concerning the standardisation of legislation of all member countries with regard to individual protection systems and the relative legislative decree dated 4<sup>th</sup> of December 1992, N° 475,

**A.N.C.I. Servizi s.r.l. a socio unico - C.I.M.A.C. section  
CENTRO ITALIANO MATERIALI DI APPLICAZIONE CALZATURIERA  
Community Identification N° 0465**

grants:

**EC TYPE-EXAMINATION CERTIFICATE  
MODULE B – EC TYPE-EXAMINATION  
N° 0161/24143/16**

for the following model of Personal Protective Equipment for II category:

**Low shoe art. "00D222"**

Manufacturer (see notes):

**EXENA SRL**

**VIA BREDA 7/A Z.I.A  
62012 CIVITANOVA MARCHE MC**

Vigevano, 13/12/2016

Responsible of EC certification of PPE  
of the foot and leg  
Pietro Biglia

Technical Responsible  
Giuseppe Bellotti

A.N.C.I. Servizi S.r.l.  
a socio unico  
Sede legale e amministrativa  
20149 MILANO  
Via Monte Rosa, 21  
Tel. 02.438291  
Fax 02.48005833  
Cap. Soc.: € 10.400 i.v.  
C.F./P.I.: 07199040150  
Reg. Imprese n° 229059  
Trib. di Milano  
R.E.A. n° 1147818



**CIMAC**  
Centro Italiano  
Materiali di Applicazione  
Calzaturiera



PRD N° 0171 B

Membro degli Accordi di Mutuo Riconoscimento  
EA, IAF e ILAC

Signatory of EA, IAF and ILAC  
Mutual Recognition Agreements

Sede operativa: 27029 VIGEVANO (PV) - C.so G. Brodolini, 19 - Tel. 0381.84722 - Fax 0381.73393 - E-mail: [info@cimaonline.com](mailto:info@cimaonline.com) - Internet: <http://www.cimaonline.com>

## 1. Description of personal protective equipment:

PPE Category: second category

Type of PPE: safety footwear for professional use according to EN ISO 20345:2011 standard

Design: A - Low shoe

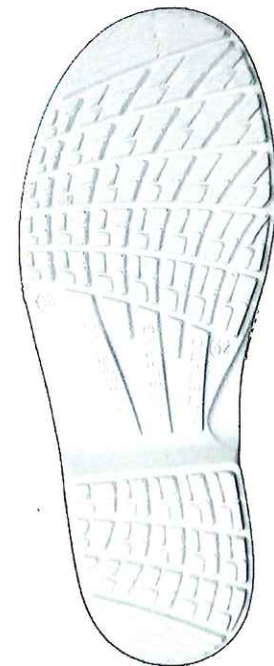
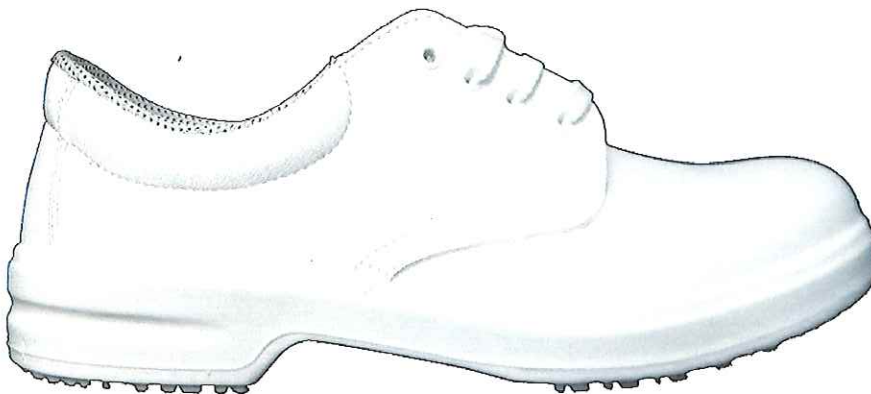
Classification: I - Footwear made from leather and other materials, excluding all-rubber or all-polymeric footwear

Size range: from 35 to 48 (French size)

Identification of last: 530

Manufacturing process: Injection

The footwear has a:           metallic toecap toecap cod. "AC002.02 (SAFIT 0443)"  
  removable insock cod. "AC001.293"





**2. The tests and the examinations to verify the conformity of the article (in compliance with art. 10 of Directive 89/686/EEC – Decision 768/08/EC Module B) are performed applying the following harmonized standards and the Regulation 1907/2006/EC Annex XVII and subsequent amendments and integrations:**

- EN ISO 20344:2011 – Personal protective equipment – Test methods for footwear.
- EN ISO 20345:2011 – Personal protective equipment – Safety footwear.

**3. The results of tests and examinations are contained in the following test reports:**

C.I.M.A.C.	RP 2016\2475-1-RP-2	dated	13/12/2016
C.I.M.A.C.	RP 2016\2475-1-RP-3	dated	13/12/2016
C.I.M.A.C.	RP 2016\2475-1-RP-4	dated	13/12/2016

**4. Requirements of the personal protective equipment:**

The low shoe art. "00D222" complies with:

the basic requirements for safety footwear specified in table 2 of EN ISO 20345:2011 standard;

the additional requirements for special applications specified in table 18 of EN ISO 20345:2011 standard:

(Category S2)

- heel area closed;
- antistatic properties;
- energy absorption of seat region;
- water resistant upper;
- fuel oil resistant outsole;
- cleated outsole.

The shoe complies with what prescribed by EN ISO 20345:2011 standard concerning the slip-resistance of the outsole, "SRC" requirement.

In the model of Personal Protective Equipment and its components was not detected the presence of dangerous substances listed in Annex XVII of Regulation 1907/2006/EC and subsequent amendments and additions.



## 5. Marking of the personal protective equipment:

The following information is reported on the footwear in a durably and indelibly marked:

- the "CE" marking
- date of manufacture (month and year)
- manufacturer's type designation: 00D222
- the number and year of the reference European standard: EN ISO 20345:2011 (see notes)
- the symbols appropriate to the protection provided: S2-SRC (see notes)
- manufacturer's identification mark: "EXENA"
- size.

## 6. Notes:

- "*making available on the market*" shall mean any supply of a product for distribution, consumption or use on the Community market in the course of a commercial activity, whether in return for payment or free of charge.
- "*placing on the market*" shall mean the first making available of a product on the Community market.
- "*manufacturer*" shall mean any natural or legal person who manufactures a product or has a product designed or manufactured, and markets that product under his name or trademark.
- "*authorised representative*" shall mean any natural or legal person established within the Community who has received a written mandate from a manufacturer to act on his behalf in relation to specified tasks.
- "*harmonised standard*" shall mean a standard adopted by one of the European standardisation bodies listed in Annex I to Directive 98/34/EC on the basis of a request made by the Commission in accordance with Article 6 of that Directive.
- "*accreditation*" shall mean an attestation by a national accreditation body that a conformity assessment body meets the requirements set by harmonised standards and, where applicable, any additional requirements including those set out in relevant sectoral schemes, to carry out a specific conformity assessment activity.
- "*conformity assessment*" shall mean the process demonstrating whether specified requirements relating to a product, process, service, system, person or body have been fulfilled.
- "*recall*" shall mean any measure aimed at achieving the return of a product that has already been made available to the end user.
- "*withdrawal*" shall mean any measure aimed at preventing a product in the supply chain from being made available on the market.
- "*CE marking*" shall mean a marking by which the manufacturer indicates that the product is in conformity with the applicable requirements set out in Community harmonisation legislation providing for its affixing.
- The content of this EC Type-Examination Certificate is referred to the tested personal protective equipment only.
- This EC Type-Examination Certificate may be integrally duplicated; the copy must be faithful, legible (if pint size) and must contain the bold caption "TRUE COPY".